



# UNIFORM GUIDE

THREADS

# INTRODUCTION ■ ■ ■



Dear Parent,

This guide has been put together to assist you on the following:

- Selecting the correct uniform for your child
- Identifying the correct size
- Maintaining the uniform
- Ordering
- Information on customer service

We hope that you will find this guide useful. If you have any comments or suggestions relating to this guide kindly email these to [support@threadsme.com](mailto:support@threadsme.com).

We wish your child all the success for this academic year and would like to thank you for your continued support.

*threads*™

# INDEX ■ ■ ■

PAGE NO.

•	KG 1 - GRADE 4 BOYS	4
•	KG 1 - KG 2 GIRLS	5
•	GRADE 5 - 12 BOYS	6
•	GRADE 1 - 12 GIRLS	7
•	UNISEX PE & WINTER	8
•	UNIFORM CARE GUIDE	9
•	HOW TO ORDER	10
•	SIZING	11
•	SIZING	12
•	HOW TO MEASURE	13
•	CUSTOMER SUPPORT	14

\* All measurements referred to in this guide, are in inches.



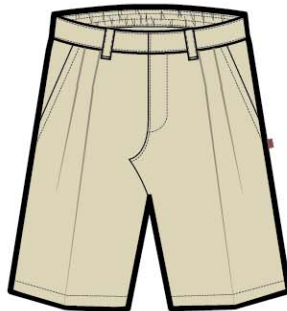
# GRADE – KG1 - GRADE 4(BOYS)



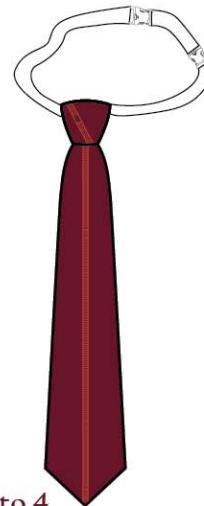
SHORT SLEEVE SHIRT



SHORTS



TIE



Grade 1 to 4

SOCKS & SHOES



BELT

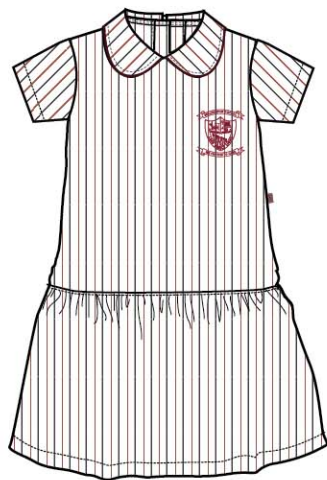


SCHOOL BAGS WITH LOGO



PLEASE REFER TO THE SIZING GUIDE ON PAGE 11 & 12  
ALL COLOURS ARE FOR ILLUSTRATIVE PURPOSES ONLY.

DRESS WITH BLOOMER



SOCKS



SCRUNCHIE



BLACK SHOES



SCHOOL BAGS WITH LOGO



12 Inches Bag

SCHOOL BAGS WITH LOGO



12 Inches Bag

PLEASE REFER TO THE SIZING GUIDE ON PAGE 11 & 12  
ALL COLOURS ARE FOR ILLUSTRATIVE PURPOSES ONLY.



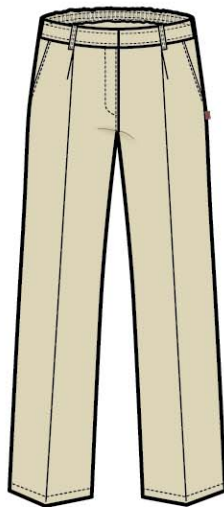
# GRADE – 5 - 12(BOYS)



## SHORT SLEEVE SHIRT

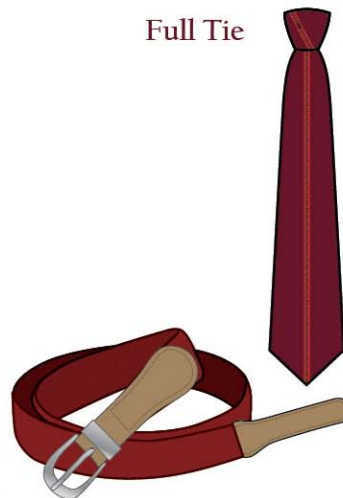


## TROUSERS



## TIE & BELT

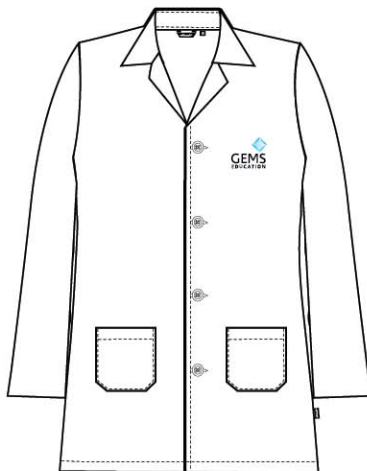
Full Tie



## SOCKS & SHOES



## UNISEX LAB COAT



Grade 11 TO 12

## SCHOOL BAGS WITH LOGO

18 Inches bag



16 Inches bag

PLEASE REFER TO THE SIZING GUIDE ON PAGE 11 & 12  
ALL COLOURS ARE FOR ILLUSTRATIVE PURPOSES ONLY.

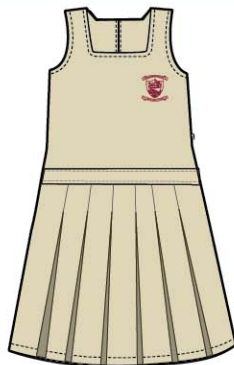
# GRADE – 1 - 12(GIRLS)



SHORT SLEEVE SHIRT

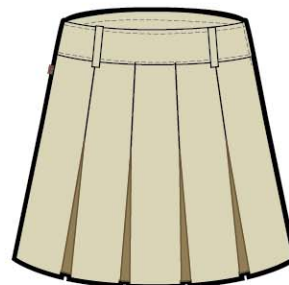


PINAFORE



KNEE LENGTH SKIRT

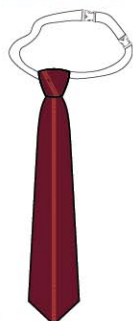
Grade 5 to 12



TIES

Elastic Tie

Full Tie

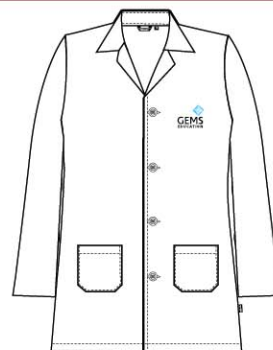


Grade 1 to 4

SCRUNCHIE



UNISEX LAB COAT



Grade 11 TO 12

BLACK SHOES/WHITE SOCKS



BELT



SCHOOL BAGS WITH LOGO

18 Inches bag



16 Inches bag

PLEASE REFER TO THE SIZING GUIDE ON PAGE 11 & 12  
ALL COLOURS ARE FOR ILLUSTRATIVE PURPOSES ONLY.

# GRADE – UNISEX PE AND WINTER



UNISEX POLO KGI-GRADE12(YELLOW)



UNISEX POLO KGI-GRADE12(RED)



UNISEX POLO KGI-GRADE12(BLUE)



UNISEX POLO KGI-GRADE12(GREEN)



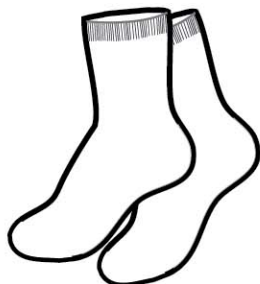
UNISEX KGI AND KG 2



UNISEX TRACK PANT 1-12



WHITE SOCKS



UNISEX PULLOVER



WHITE SHOES

Lace shoes



Velcro shoes



PLEASE REFER TO THE SIZING GUIDE ON PAGE 11 & 12  
ALL COLOURS ARE FOR ILLUSTRATIVE PURPOSES ONLY.



# UNIFORM CARE GUIDE



## WASH CARE SYMBOLS



The following guidelines will help you gain longevity from your garment.

SKIRTS/TROUSERS/PINAFORE /SHORTS	Wash at 40°C. Higher temperatures will cause shrinkage, affect the colour or weaken the fibres. Wash dark colours separately. Avoid strong fabric conditioners as they can break the fibres. Do not bleach.	Do not tumble dry pleated garments as the pleats will disappear. For best results simply drip dry after washing.	If you want to improve the creases, use a steam iron or a clean damp cloth, with a regular iron. Do not use a hot iron directly on the garment.
SPORTS SHORTS/TRACK PANTS/PE POLO SHIRTS	Always wash at 40°C. Higher temperatures will cause shrinkage, affect the colour or weaken the fibres. Wash dark colours separately. Avoid strong fabric conditioners. Do not bleach.	These shorts do dry very quickly if left to dry naturally, but if you want to tumble dry them ensure they are on a cool setting.	Ironing is not necessary for these shorts. However if you want to iron, use a cool iron setting and place a clean damp cloth between the garment and the iron. Do not iron directly on to the garment and do not use excessive heat as this makes the fabric brittle. Do not iron on the print or Embroidery directly please iron on reverse.
SHIRTS - BLOUSES 65% Polyester, 35% Cotton weave	Can be machine washed on a gentle polyester/easy care/delicate programme up to 40°C. Avoid strong fabric conditioners. Do not bleach.	These garments can be tumble dried on a cool/low setting. If the temperature is higher the fibres can be damaged and shrinkage may occur.	With these garments ironing is not always necessary if hung up after washing, however if you want a smart finish on the garment use the synthetic setting and iron directly on to the garment ironing is easier if the garment is slightly damp. Do not iron on the print or Embroidery directly please iron on reverse.
Knitted fabrics 100% acrylic; combinations of: wool/nylon, wool/acrylic, wool/polyester (jumpers, cardigans, scarves & hats); cotton/acrylic; cotton/polyester; cotton/nylon	Wash knitted garments inside out to reduce the loose fibres adhering to the outer surface of other garments. Always wash the garment separately, or with others of similar colour; use a gentle wool cool wash programme (30°C) and only mild detergent if required. Some fabric conditioners may harm the garment fibres thereby increasing pilling.	Do not tumble dry, the fabric can be damaged and the neck, welt and cuffs can lose their elasticity. ALWAYS dry flat and out of direct sunlight.	NEVER iron on the face fabric of the garment, as it will change the appearance of the garment and cause shine. Always iron the inside of the garment.

## SHOE CARE - BLACK

Simply remove excess dirt with a cloth and/ or a brush and apply the cream shoe polish never liquid shine evenly to your shoes.

Make it a point to polish your shoes once in 2 days to restore the appearance of your shoes.

Store your shoes using a shoe tree, this will help the shoe retain its shape. If you don't have a shoe tree, stuff the toe cap with newspaper or tissue.

Never store shoes near direct heat.

## SHOE CARE - WHITE

Avoid washing them in a washing machine and especially avoid putting them in the dryer.

Always use a mild detergent and a soft brush to clean them and air dry the shoes after washing.

Once clean, consider spraying canvas shoes with a "Scotchguard" type fabric protector. Test the spray on the tongue of the shoe to make sure it won't stain.

\* KINDLY NOTE THAT ANY PRINTS / LOGOS / EMBELLISHMENTS MUST NOT BE IRONED ON DIRECTLY BUT INSTEAD ON THE REVERSE.

## TO PLACE AN ORDER ■ ■ ■



- Visit our retail shop at Al Nahda, opp NMC Hospital, (For location map please visit our website - [www.threadsme.com](http://www.threadsme.com) or email us on [support@threadsme.com](mailto:support@threadsme.com)) open between 9:30am - 7:30pm, Saturday - Thursday. Closed on Friday and public holidays.
- For a home delivery option please email us at [support@threadsme.com](mailto:support@threadsme.com) with your order. Our customer service agent will process your order and you can pay the courier (cash only) upon delivery. The customer service agent will advise you of the delivery charge prior to dispatching your order.
- We will soon be launching our online shopping portal, where you will need to register, fill out the order form and complete the online payment. Subject to availability your order will be dispatched within 2 - 4 working days to your registered location.
- A made to measure option is also available if your preferred size is not in stock. The standard delivery time is 15 days during the off peak seasons and will extend up to 30 days during the peak seasons. To request a made to measure form or require any assistance on made to measure kindly send an email to [support@threadsme.com](mailto:support@threadsme.com).

# SIZING GUIDE ■ ■ ■



## UNISEX SHIRT

SIZE	2	4	6	8	10	12	14	16	18	20	22	24	26	
CHEST	27	29	31	33	34.5	37	38	40	42	44	46	48	50	
LENGTH	17.5	18.5	20	22	24	25	25.5	26.5	27.5	28.5	29.5	30	30.5	

## GIRLS BLOUSE

SIZE	2	4	6	8	10	12	14	16	18	20	22	24
CHEST	26	28	30	32	32.5	35.5	36	40	41	44	47	48
LENGTH	16.25	18	18.5	20.5	21	22.25	23.25	24.75	26.25	27.5	28.25	29

## TROUSERS

SIZE	2	4	6	8	10	12	14	16	18	20	22	24	26	28
FITS WAIST	16-20	17-21.5	18-23	19.5-24.5	21-26	22.5-28	24-30	25.5-32	27-34	28.5-35	30-36	31.5-35.5	33-39	34.5-40.5
LENGTH	22	24	26	28	30	32	34	36	38	40	42	44	46	48

## SKIRTS (KNEE LENGTH)

SIZE	6	7	8	9	10	11	12	13	14	15	16
WAIST	23	25	27	29	31	33	34	37	40	43	46
LENGTH	23.5	23.5	23.5	23.5	24.5	24.5	24.5	25	25	26	26

## PINAFORE

SIZE	4	6	8	10	12	14	16
CHEST	24	26	28	30	32	34	36
LENGTH	23	25	27	29	31	33	35

## SHORTS

SIZE	2	4	6	8	10
FITS WAIST	18-23	19-24	20-25	22-27	24-29
LENGTH	11.75	12.5	13.75	15.25	16.5

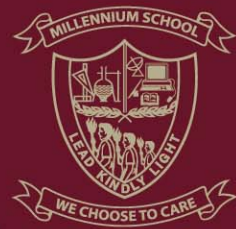
## PT SHORTS

SIZE	2	4	6	8	10	12	14	16	18	20	
WAIST	16.5-27	17.5-29	18.5-31	19.5-33	21-35	22-37	24-41	26-43	28-45	30-47	
LENGTH	23.5	23.5	23.5	23.5	24.5	24.5	24.5	25	25	26	

\* ALL MEASUREMENTS IN INCHES



# SIZING GUIDE ■ ■ ■



## UNISEX PE POLO

SIZE	22	24	26	28	30	32	34	36	38	40
CHEST	21	23	26	29	32	34	37	40	43	47
LENGTH	15	16	17.5	19	20.5	22	23.5	25	26.5	28.5

## UNISEX TRACK

SIZE	22	24	26	28	30	32	34	36	38	40	42	44	46	48
FITS WAIST	15-25	16-26	18-28	18-31	20-30	20-32	22-34		24-37	22-39	26.5-39.5	26.5-42	27.5-43	28-45
LENGTH	21	23	26.5	27	29.5	31	34.5		38	39	40.5	42	43.25	44

## SHOES

UK SIZE	9	10	11	12	13	1	2	3	3.5	4	4.5	5	6	7	8	9	10	11	12	13
EU SIZE	27	28	29	30	31	32	33	34	35	36	37	38	39	40	41	42	43	44	45	46

## TIES

FULL TIE LENGTH	48	52	56	60	
ELASTIC TIE LENGTH	10	12	15	16	

## SOCKS

SIZE	XS	S	M	L	XL	2XL	3XL
FOOT LENGTH	15	17	19	21	23	25	27

## BELT

SIZE	XS	S	M	L	XL	2XL	3XL
WAIST	18-22	23-27	28-32	33-37	38-42	43-47	48-52

## DRESS

SIZE	2	4	6	8	10	12
CHEST	24	28	30	32	34	36
LENGTH	221	25	27	29.5	31	33

## UNISEX PULLOVER

SIZE	24	26	28	30	32	34	36	38	40	42	44
CHEST	26	26	26.5	30		34		35	36	38	40
LENGTH	17.25	19.5	18.25	19.5		21.5		24.5	26.5	27	27

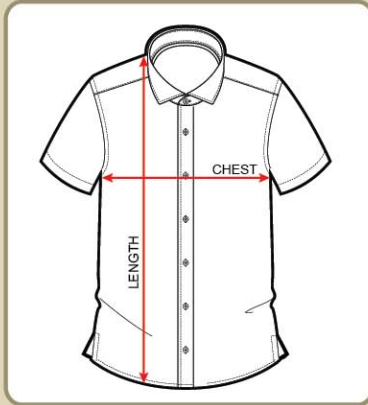
\* ALL MEASUREMENTS IN INCHES



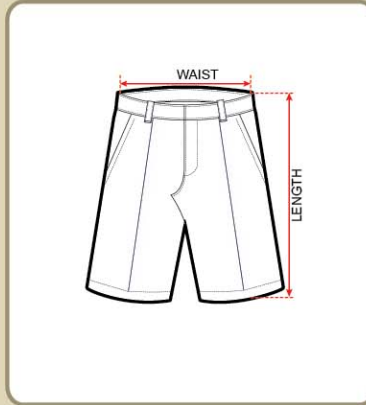
# HOW TO MEASURE ■ ■ ■



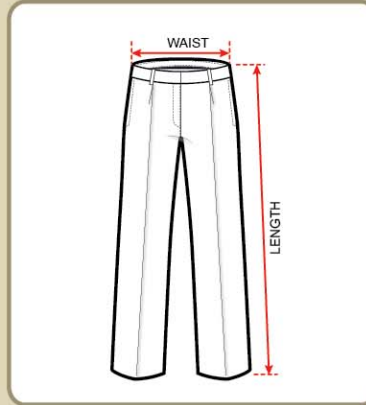
**SHIRT / BLOUSE / PE POLO**



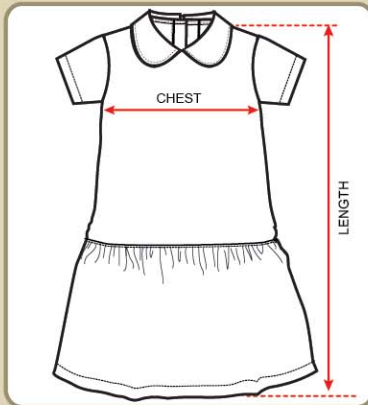
**SHORTS / PE SHORTS**



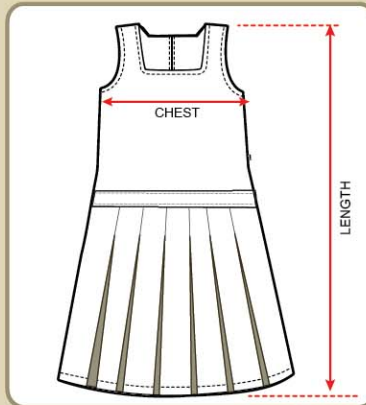
**TROUSER / TRACK PANTS**



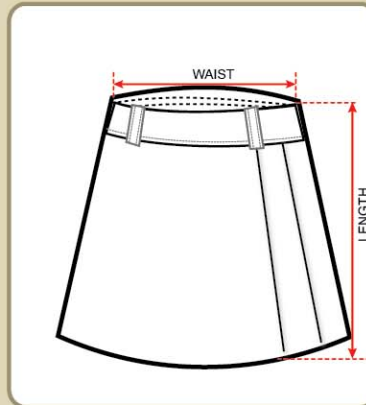
**DRESS**



**PINAFORE**



**SKIRT - KNEE & LONG**





- At Threads we take our commitment to service very seriously and any customer concern registered, will receive an immediate acknowledgement and a response within 48 hours.
- You can visit our website at [www.threadsme.com](http://www.threadsme.com) and fill out an enquiry form if you wish for a customer service agent to contact you about an order you may have placed or intend to place.
- If you wish to register a concern on any matter related to the product or staff, please call our toll free no. 800-Threads(8473237) where our customer service agent will register your concern and provide you with a case id which can be quoted in all future correspondences. Alternatively you may also choose to send us an email at [support@threadsme.com](mailto:support@threadsme.com)
- In the event you are not satisfied with the solution offered please call our offices, quote your case Ref. no. and ask to speak to our head of operations. Should he not be able to provide you with a solution in reasonable time you can write to [ceo@threadsme.com](mailto:ceo@threadsme.com)